



T4S/T8S ToneMatch® Mixer

Firmware Upgrade Instructions

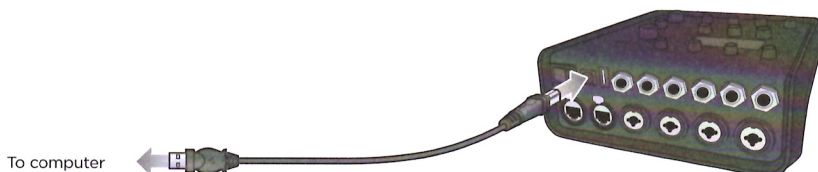
STOP!

Before proceeding, please read the following instructions:

These instructions describe how to update the firmware of your ToneMatch® mixer.

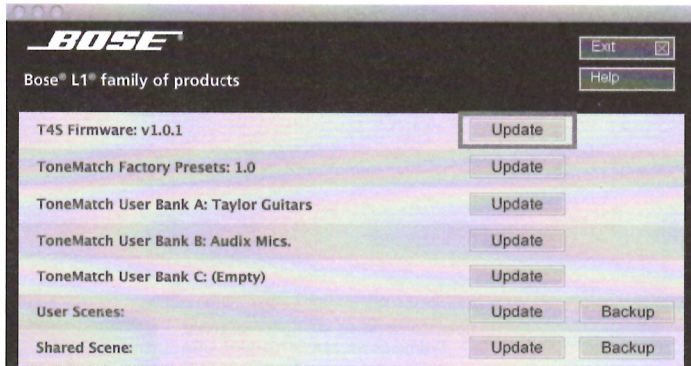
1. Download and install the L1 System Updater tool at https://www.bose.com/en_us/l1_downloads.html.
2. Connect the mixer to your computer via the 2.0 USB Type-B port on the rear panel of your mixer. See Figure 1.

Figure 1.



3. Connect your mixer to a power source via a ToneMatch cable or power supply and turn on your mixer.
4. To download the latest firmware, follow the appropriate link:
<http://bosepro.link/t4s>
<http://bosepro.link/t8s>
5. Launch the L1 System Updater.
6. Click the "Update" button next to "T4S (or T8S) Firmware". See Figure 2.

Figure 2.



WARNING: Do NOT unplug or power off the mixer while it is updating.